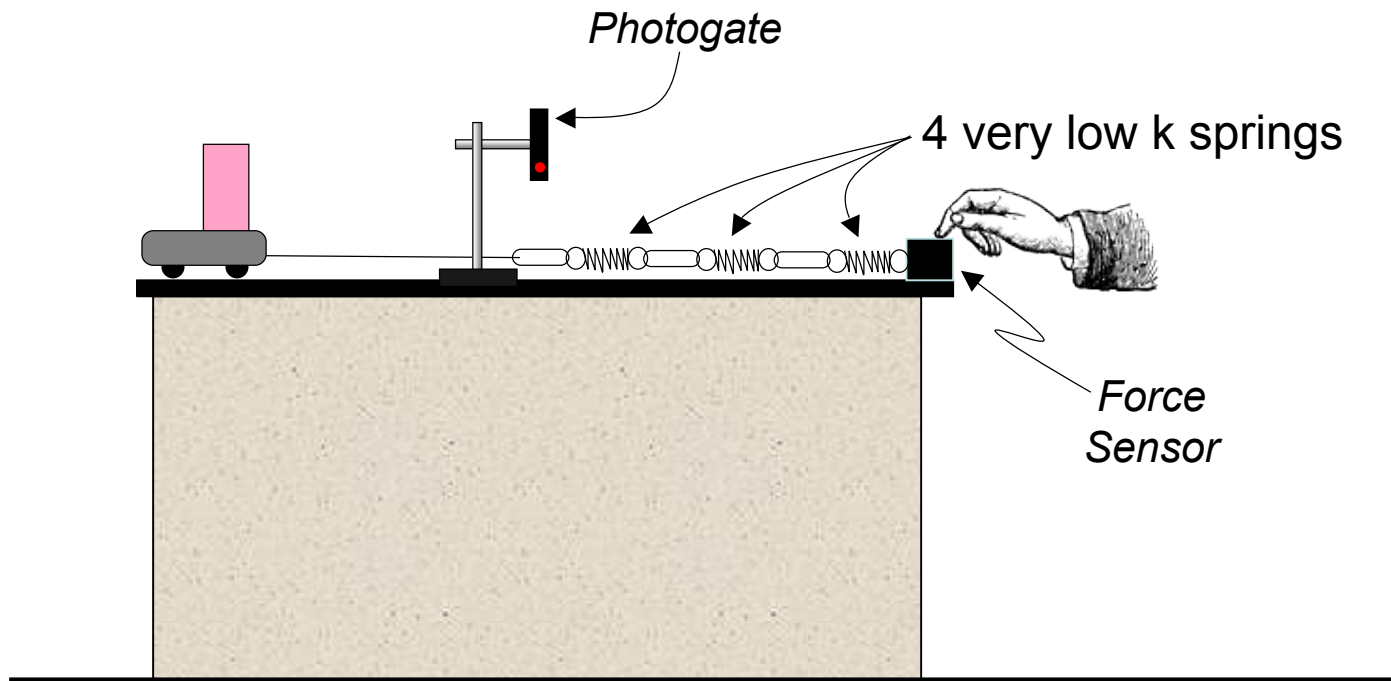
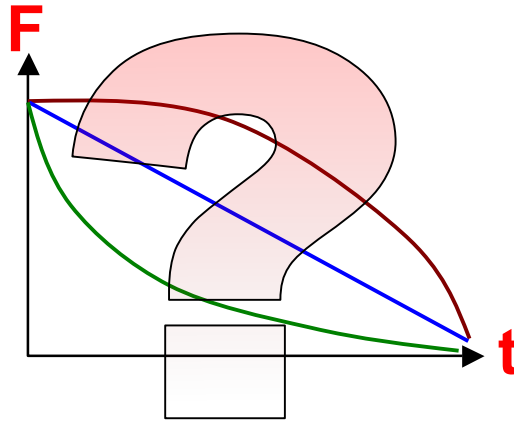


J2: Impulse w/ variable $F(t)$



Goal: Compare theoretical $F(t)$ to measured $F(t)$



Background: $\int F dt = J = \Delta p = m(v_f - v_0)$

See class notes... for the rest

- examine best-fit model parameters vs. theoretical values

- ✓ coefficient of t ?
- ✓ how do you measure k ? m ?
- ✓ p_{FINAL} vs $\int Fdt$



- Notes:

- ✓ Do NOT over-stretch the poor little springs
- ✓ photogate: set GATE timing and card length ("Set Distance")
- ✓ Try it twice: two different cart masses
- ✓ May have to struggle to get appropriate best fit equation
- ✓ we are not building a model,
simply verifying a theoretical relationship